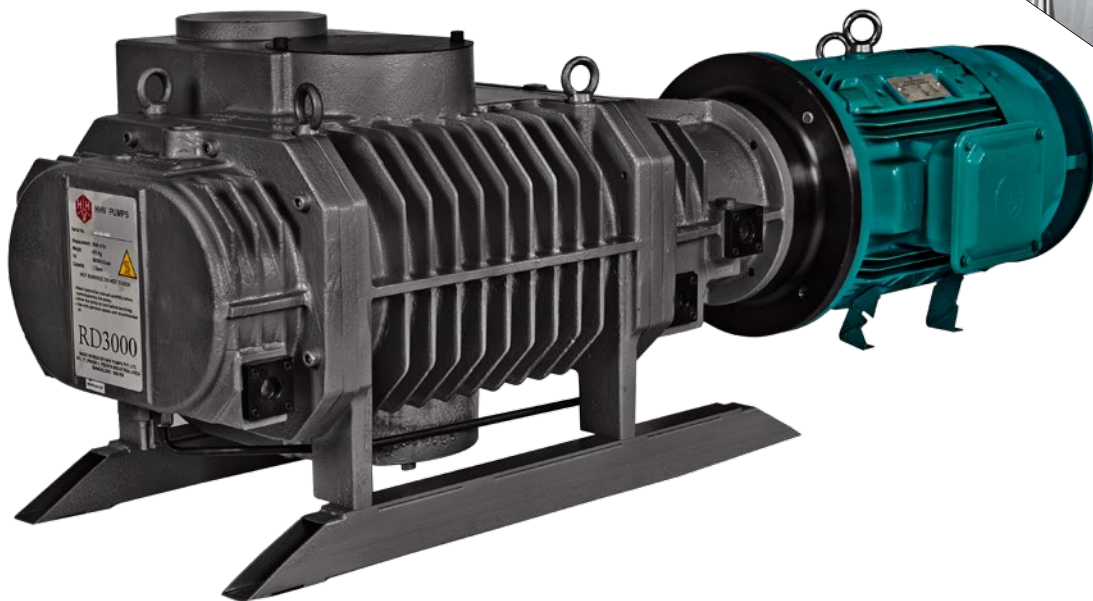




RD SERIES

ENGINEERED FOR VERSATILITY

Roots boosters with enhanced performance and longevity



About us

HHV Pumps is a vacuum solutions company catering to the Industrial, Process and Scientific Vacuum market.

Rough vacuum – Pick & place, Job holding, Woodworking, Thermoforming etc.

Medium vacuum – Refrigeration and Air Conditioning, Transformer oil filtration, Distillation etc.

High vacuum – Industrial and Scientific R&D, High Vacuum Distillation, Space Simulation etc.

HHV Pumps offers Vacuum Pumping Systems, Solutions, and Services to its customers. Our team in Bangalore is supported by global vacuum technology experts having more than four decades of experience. The core team is working together since inception fuelling the growth of the organization along with every individual's professional growth. We have an all India Sales and Service network with eight strategically located branches. Our motto is to support our stakeholders for all Vacuum Pumping requirements. We also supply a wide range of products to International customers through our Global partners. HHVP has strong applications expertise built on decades of experience in International Vacuum industry enabling us to provide solutions and not just products.

We are the only Indian company with advanced technological capability for manufacturing Vacuum Pumps to Global standards.



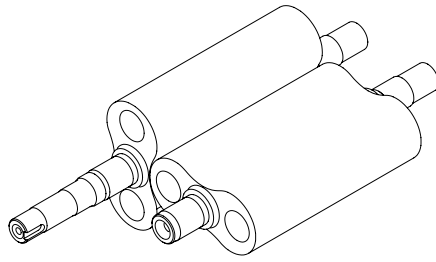
RD250

RD500

RD1000

RD1500

RD3000



The RD pumps are positive displacement roots vacuum pumps. The pump bearings, gears and seals are lubricated by oil fed from oil reservoirs at either ends of the roots pump. A series of seals stops the oil from reaching the vacuum side of the pump. Roots pumps help in shifting the operating pressure to a high vacuum range due to rotation of gear timed rotors in opposite directions. Roots vacuum pumps are capable of improving the attainable ultimate pressure of a pump system by a factor of 10.

Features

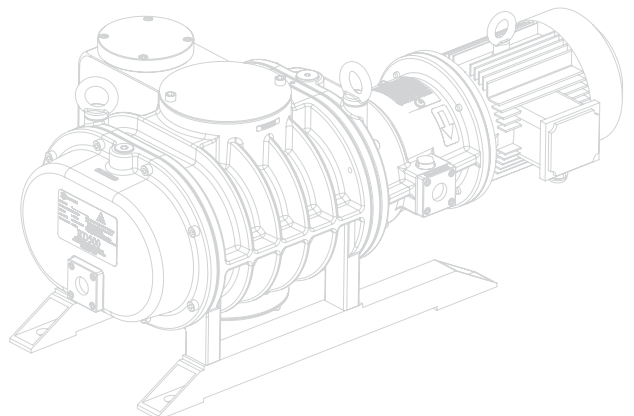
- Robust
- Suitable for continuous operation
- High compression ratio
- Futuristic bearing system designed for smoother and quiet operation
- Built-in mechanical bypass valve for atmospheric start
- Enhanced performance for longer life
- Pumps are available with flame proof motors
- Customisation of inlet and outlet flanges to suit the requirement

Industry/Markets

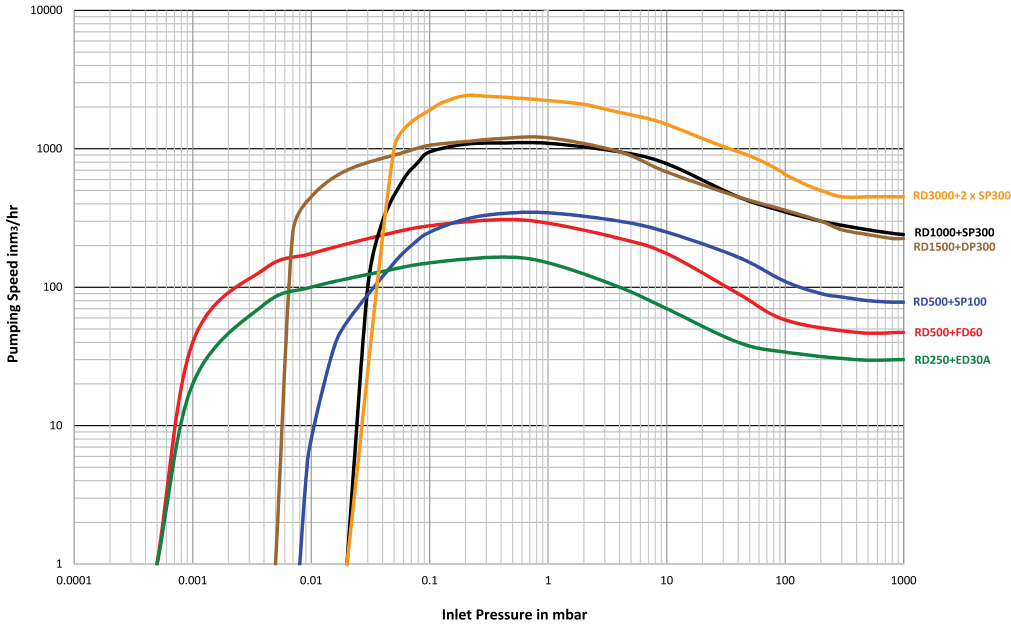
- Automotive
- Aviation
- Chemical and Process Industries
- Coating & deposition
- Electrical & power
- Environment
- Food
- Lighting
- Oil & gas
- Metallurgy
- Nuclear
- Space research
- Semiconductor
- Solar

Typical Applications

- Light bulb evacuation
- Thin film coating
- Heat treatment
- Drying
- Distillation
- Transformer oil filtration



Performance Curves



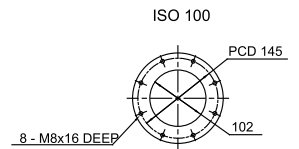
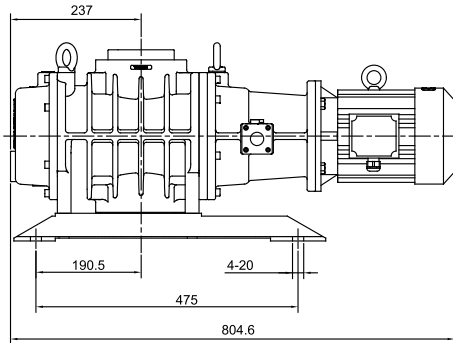
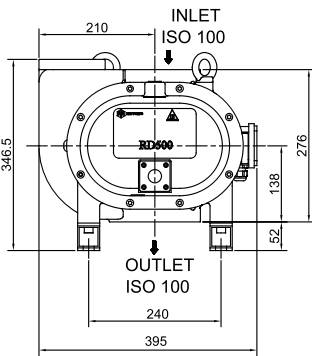
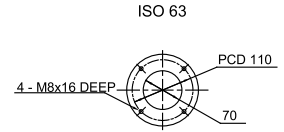
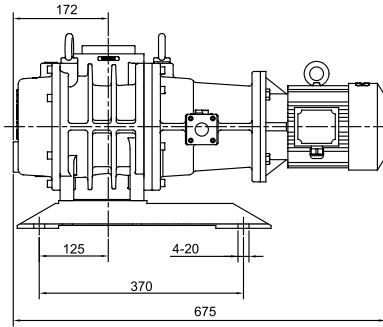
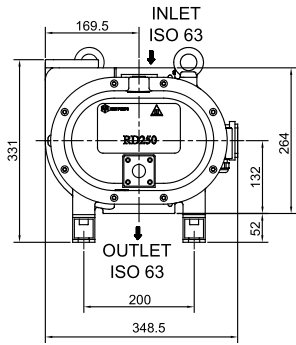
Specifications

Particulars	Unit	RD250	RD500	RD1000	RD1500	RD3000
Nominal pumping speed @ 50Hz	m ³ /h (L/min)	250 (4167)	500 (8300)	1500 (25000)	1500 (25000)	3000 (50000)
Maximum pumping speed with backing pump	m ³ /h (L/min)	170 (2833) ED30A	320 (6167) FD60	1020 (17000) SP300	1350 (22500) DP400	2250 (37500) 2 x SP300
Ultimate total pressure	mbar (Torr)	5×10^{-4} (3.75×10^{-4})	5×10^{-4} (3.75×10^{-4})	2×10^{-2} (1.5×10^{-2})	5×10^{-3} (3.75×10^{-3})	2×10^{-2} (1.5×10^{-2})
Recommended backing pumps		ED30A	FD60 SP100*	SP300*	SP300*	2 x SP300*
Maximum allowable pressure difference	mbar (Torr)	80 (60)	80 (60)	65 (49)	65 (49)	30 (23)
Permissible cut-in pressure	mbar (Torr)	30 (22.5)	30 (22.5)	30 (22.5)	30 (22.5)	30 (22.5)
Nominal power rating at 50Hz	kW (HP)	1.1 (1.5)	1.5 (2)	3.7 (5)	3.7 (5)	7.5 (10)
Motor rotational speed at 50Hz	rpm	3000	3000	3000	3000	3000
Weight	kg (lb)	97 (214)	127 (280)	275 (605)	275 (605)	450 (990)
Inlet connection	ISO	ISO 63	ISO 100	ISO 160	ISO 160	ISO 160
Outlet connection	ISO	ISO 63	ISO 100	ISO 100	ISO 100	ISO 160
Cooling medium		Air	Air	Air	Water	Water
Oil capacity	Lts	0.9	0.9	2	2	2
Recommended oil		MD504				
Power supply		Three Phase 415V, 50Hz				

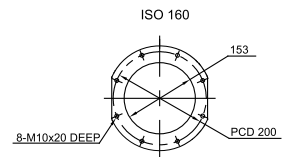
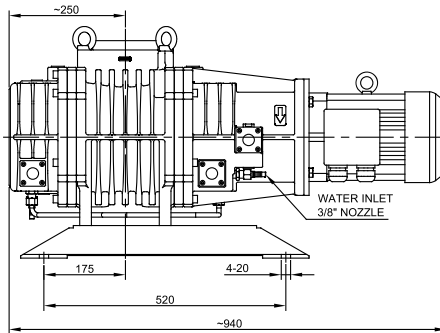
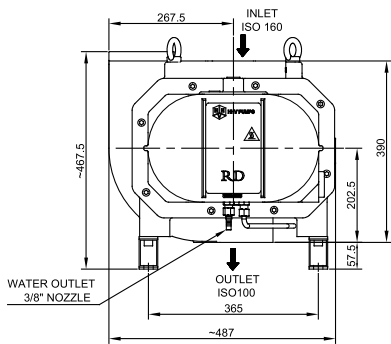
* Ultimate total pressure with the single stage backing pumps will be lower as compared with two stage backing pumps

Dimensions

RD250 & RD500

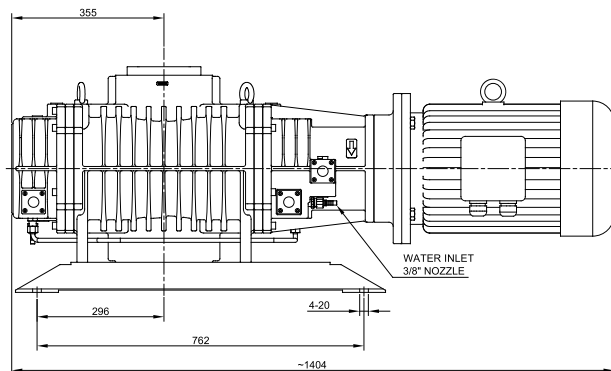
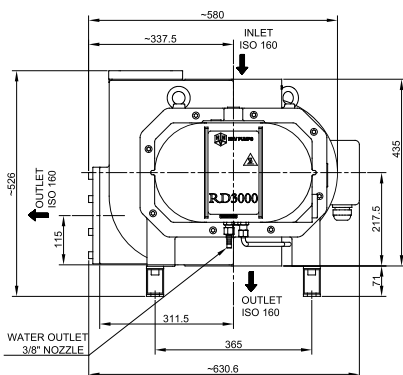


RD1000 & RD1500



Model	Cooling	Nozzle
RD1000	Air	-
RD1500	Water	3/8"

RD3000



All dimensions indicated above are in mm

SARVADHAR TRADING PVT LTD
Authorized Distributor



HHV PUMPS
Vacuum Technology Solutions and Services

Ahmedabad
Mob: +91 99988 61461

Rajkot
Mob: +91 97250 55006

 info@sarvadartrading.com  www.sarvadartrading.com